



2020



THE JUSTICE BASED APPROACH: FOUNDATION COURSE

Join the movement for more effective and radical change through this life-changing course on social and environmental justice.

THE ESSENTIALS



Course length: 6 weeks



Time commitment: 6-8 hours per week



Price: \$450



Language: English



Delivery methods: Interactive online sessions, self-led learning, and group work



Next course dates: Week of 2nd November until week of 7th December 2020



Enrollment deadline: 30th October 2020 while spaces are available



More information: www.unitededge.net/events 



Booking form: <https://united-edge.typeform.com/to/DabuyH> 

THE REASON

We've been destroying our world and its people for generations. The solutions we have been using are no longer enough. We have to do better, and we must act now.

The Justice Based Approach will revolutionize the way you work on humanitarian, development, social change, and environmental justice initiatives in ways that will impact both your work and your life.

As we face a time of intense and rapid change, we must create space to step back and consider some of the most pressing issues facing the world. This course will explore new approaches, real life examples, tools, and perspectives that will re-energize you with new knowledge and skills, as well as renewed hope and direction.



CRITICAL THINKING

You will develop the skills to think critically about the systematic challenges facing our sector and wider society and your role in solving them.



LEADERSHIP FOR IMPACT

You will develop as a leader and become more effective in bringing about positive change and lasting impact.



TRANSFORMATIVE PROGRAMMING

You will develop your ability to ask tough questions and utilize tools that will transform the way you design programmes, lead teams and live your life.

This course is participatory, innovative and proven to be incredibly impactful.

Join us!



THE COURSE

With a Justice Based Approach, we reflect on why -- after 25 years of rights-based approaches -- inequality, environmental destruction, oppression, and impunity are bigger challenges than ever before. We will critically challenge and explore many assumptions about methodology and practice in the following areas:

- All Five Pillars of the Justice Based Approach
- Power and oppression
- Strategic and personal leadership
- Effective programme design
- Development theory and history
- Evidence-based decision-making
- Participatory approaches
- System analysis
- Localization and decolonizing aid
- Rights-based programming
- Monitoring and evaluation for learning
- Ethical programming and accountability
- Climate and gender mainstreaming

We will also explore a number of innovative and exciting alternative approaches to social and environmental change that you can apply to your work.

The course will challenge you, inspire you and give you the tools to support communities and partners to lead change that is truly transformative.

A photograph of a woman with dark hair, wearing a patterned orange and black top, looking down at a document. The image is partially obscured by a grey overlay containing text and quotation marks.

“

If you've ever questioned current development models or your place within them, or better yet if you haven't questioned any of that, this will be a superb way to crack open your underlying assumptions and get you thinking of how you really want to approach your work in a comprehensive way.

Independent Participant, Vietnam

”

THE SCHEDULE

The course starts the week of 2nd November and ends the week of 7th December, 2020. All sessions will take place during the morning for Africa and Europe, late morning for the Middle East, mid-day for South Asia, the afternoon for Southeast Asia, and the early evening for the Pacific and Australia.

Each week includes 6 hours of live sessions. We will also have a short orientation session and a debrief session before and after the course.



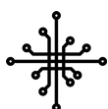
Orientation: Meet our team of facilitators for an introduction to the course, meet other participants and familiarize yourself with the online platform ahead of the course starting.



Justice week (week of 2nd November): Explore the current status of rights and justice, a history of approaches to development work and rights, and how to make our work more transformative.



Action week (week of 9th November): Explore the hidden impact of our work, how individuals, projects and organisations can better align to justice, and how power is central to positive change.



Systems week (week of 16th November): Look at the role of systems in creating injustice and how systems of oppression must be addressed through our work - including a much deeper understanding of identity and privilege.



Decisions week (week of 23rd November): Understanding what shifting power really means by analyzing how and where decision-making is taking place and how we can embed these lessons into the design of our programmes.



Models week (week of 30th November): Analyzing the solutions that exist for social or environmental change and how we can discover and leverage alternative models that are more holistic, innovative and power-shifting.



Accountability week (week of 7th December): Explore the role of accountability in creating justice and how brave accountability can transform our impact as organisations and individuals.



Debrief: Reflect on our learning and develop actionable steps to take forward.

THE APPROACH

Our style of online delivery creates genuine human connection, facilitates deeply reflective and thoughtful discussions, and leads to real impact and effectiveness.

The course will use mixed methodologies including participatory live sessions, interactive online tools, movement, games, reflection, group activities, optional offline self-study, and more. Our in-person trainings are not "death by Powerpoint," and our online courses are not "death by Zoom"!

“

From the moment the course begins we take each group on a journey into the world of social change. From learning about the history of development and human rights to exploring system analysis and how to develop the most effective indicators for our work, every part of this course leads to the next.

”

Daniel Bevan, Co-Facilitator



Ongoing growth

We offer optional tailored mentoring programmes to provide personalized support during and after the course to put your learning into practice. For our course participants, this is 35-50% off our normal mentoring rates! You can add this to your booking [here](#).

- During the course: 1 hour of private mentoring each week for six weeks (\$250 USD)
- After the course: 1 hour of private mentoring each month for six months (\$250 USD)
- Full package: 6 hours of sessions during the course and 6 hours after (\$400 USD)
- Bespoke package: Please get in touch!

MEET YOUR FACILITATORS

This course is designed and facilitated by United Edge Co-Founders, Daniel Bevan and Matt Kletzing. With combined experience of more than 30 years in the humanitarian, development and human rights sectors, they bring to the course a wealth of hands on experience and expert facilitation skills.



DANIEL BEVAN

Daniel specializes in participatory approaches, client-led programming, capacity building, training, and monitoring and evaluation. He is deeply passionate about systemic change, social justice and critical thinking. Daniel has worked with partners as varied as governments, child and youth groups, the UN, academic institutions, activists, INGOs and affected communities. He is a strong advocate for exploring alternative models to development and is particularly interested in alternative economics and shared ownership initiatives, as well as radical conservation and rewilding.



MATT KLETZING

Matt specializes in facilitating cooperation and partnership between change makers as well as strategy development, learning and accountability. Matt has a varied social science research background and drive for impactful communication. He has supported the work of numerous social change organisations, from grassroots community groups to large networks of the world's leading humanitarian agencies. He is passionate about humanitarian action, progressive policy making, financing reform and innovation, as well as vegan living.

THE PARTICIPANTS

The course is designed for leaders of development and humanitarian agencies, as well as broader civil society and individuals who want to create positive social change or environmental impact in their work, life and community.

We welcome participants from all levels of organisations and from diverse departments to the course, which creates a rich mix of experience and perspectives. We encourage senior staff to join the course with their teams. The course will be conducted in English.

Our 1,003 course participants have come from a wide variety of organisations -- from international NGOs (52%) and national NGOs (25%) to UN agencies, government officials, foundations, donors, and independent activists and consultants. They work to alleviate poverty, respond to humanitarian crises, advocate for human rights, protect the environment, develop health and education, empower young people, women, indigenous communities, differently-abled people and other marginalized groups -- basically from every sphere of humanitarian, development, social change and environmental justice work.

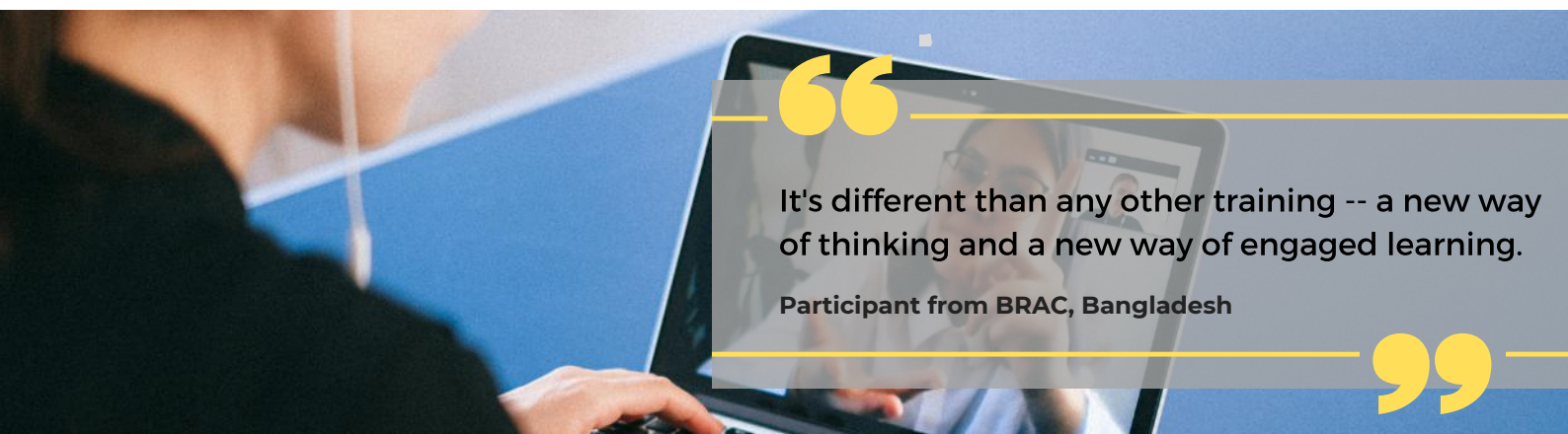
Here are just some of them:



THE PRICE

\$450 USD, which includes:

- 39 hours of live facilitated learning led by highly experienced facilitators with decades of combined experience in this field
- Justice Based Approach Resource Pack, containing notes from every session and a pre-prepared presentation so that you can hold a sharing session for your colleagues
- Justice Based Approach Toolkit to help you reflect on your own work and embed the lessons from the course
- Ongoing access to our online community of social change makers, including frequent resource sharing and direct links to our regular learning events for ongoing professional development
- A certificate to verify your course completion and increase your job prospects
- Exclusive opportunity to join [The Justice Based Approach: Advanced Course](#) and become a United Edge Associate



GROUP DISCOUNTS

Group attendance is a wonderful way to learn and develop together as a team. Receive 10% off when you book 10 or more places on a course. Groups can be from multiple organisations if they book the course together. Donors and organisations have used this as an opportunity to support partners to attend, for example.

FINANCIAL ASSISTANCE

We proudly offer a limited amount of financial assistance to help cover part of the fee for people who may otherwise find it difficult to attend. Since 2017, we have provided \$62,605 worth of financial assistance to participants, ensuring that grassroots and local organisations with limited funds and big aspirations can develop their work for greater impact and positive social change. To apply for financial assistance, please contact us: info@unitededge.net

TESTIMONIALS

We have received many stories from past participants about the enormous impact this training has had on their work and lives. Here are just a few of them.

“ It is the best training I have ever had! It helped me think differently, opened my perspective, and [taught] a new way of doing development work! ”
Participant World Vision, Cambodia

“ A must-attend if one wants to be more effective, efficient, just, humane and simply better and smarter. ”
Participant from Humanitarian Leadership Academy, Philippines

“ [The course] was really interactive and delivered with so much energy and passion. ”
Participant from Restless Development, UK

“ It will open your mind to ideas you never realized you could have. ”
Participant from WWF, Malaysia

“ It's a different frame of thinking about perennial issues that puts people at the centre of any action. ”
Participant from UN OCHA Myanmar

“ Justice based approach training is completely different than [any other] contemporary training, and it is a must-do training. ”
Participant from UNFPA, Bangladesh

“ The training was the best motivation - and energy-boost - I had in my professional career. ”
Participant from GIZ, Cambodia

“ It is awesome and vision changing for professionals who want to think and work differently. ”
Participant from Oxfam, India

“ I would strongly recommend this training, not just to those starting out their careers in development/social work, but perhaps even more so for those who have been in the line for so long that they stop asking questions and challenging themselves. ”
Participant from WWF, Malaysia

To hear more from past participants, visit www.unitededge.net/testimonials



THE IMPACT

The Justice Based Approach: Foundation Course was launched in May 2017 -- first as a pilot to test the model and then scaled-up based on the positive feedback and results. Since then, we have trained people from 427 organisations at 36 separate trainings in 15 countries across Asia, the Pacific and Europe.

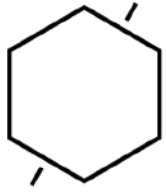
This is what our participants have told us:

- **98%** of participants would recommend the course to others working for social change
- **89%** of participants now feel able to put their beliefs and passions into action in everyday life
- **76%** of participants have used aspects of the Justice Based approach in their work since finishing the course
- **95%** of participants agree or strongly agree that the course helped them see things in a new way

In addition, participants have rated the course 6.1 out of 7 for relevance to their work.

We now have over 500 course participants in our growing online community, forming a learning group for ongoing professional and personal development.





UNITED EDGE

ACTIVISTS AT HEART, HUMANITARIANS BY TRADE AND SOCIAL ENTREPRENEURS BY DESIGN

United Edge is a social enterprise working with change makers to transform our broken systems with alternative models for global justice.

We are working towards a just world where people and the planet are prioritized over profit and short-term gains.

Everything we do is aimed at creating a more just world.



ACTIVISTS AT HEART

We are everyday people who believe that each of us has a responsibility -- and the ability -- to make a difference. We partner with change makers around the world who are committed to global justice through changing systems, shifting power and better development. We add our voices to this vibrant movement because we passionately believe in the power of individuals and groups uniting to make change happen.

HUMANITARIANS BY TRADE

We are experienced professionals with skills, expertise and insight to share. We have worked on human rights, community development and humanitarian projects for over 15 years across Africa, Asia, Europe, North America and the Middle East. Our time with communities and youth groups, local civil society and CBOs, national and international NGOs, large networks and the United Nations has helped us understand the challenges that change makers face.

ENTREPRENEURS BY DESIGN

We are a social enterprise committed to piloting power-shifting projects and providing services to change makers everywhere. Instead of imposing our solutions, we want our services to be subject to demand. Power and privilege define the way social change is usually funded and put into practice. As a social enterprise, we fund all our work by its own means. Our independence means we can focus on delivery without compromising quality or ethics.

BOOK YOUR PLACE

Places on the course are extremely limited and many of our courses get booked up quickly. Please book your place early to avoid missing out.



BOOK HERE



Click the link above or visit
www.unitededge.net/events

Please read the terms and conditions, including the cancellation policy, before booking.

Once you book your place, you will receive an invoice. We accept payment by international bank transfer and credit card. If you need to pay another way, please get in touch and we will be happy to discuss other options.

If you have any further questions please visit our FAQ page:
www.unitededge.net/faq



Don't hesitate to get in touch:
info@unitededge.net

BRINGING THE COURSE TO YOU

Please get in touch if you have a request for us to bring the course to your location or if you would like to discuss hosting an exclusive in-house course at your organisation.

We also offer other training, coaching and mentoring services, as well as taking on consultancies for like-minded organisations. Find out more on our website.



GOT ANY QUESTIONS?

We'd love to hear from you!

Email us: info@unitededge.net

www.unitededge.net 

Connect with us:

